



四川建築職業技術學院

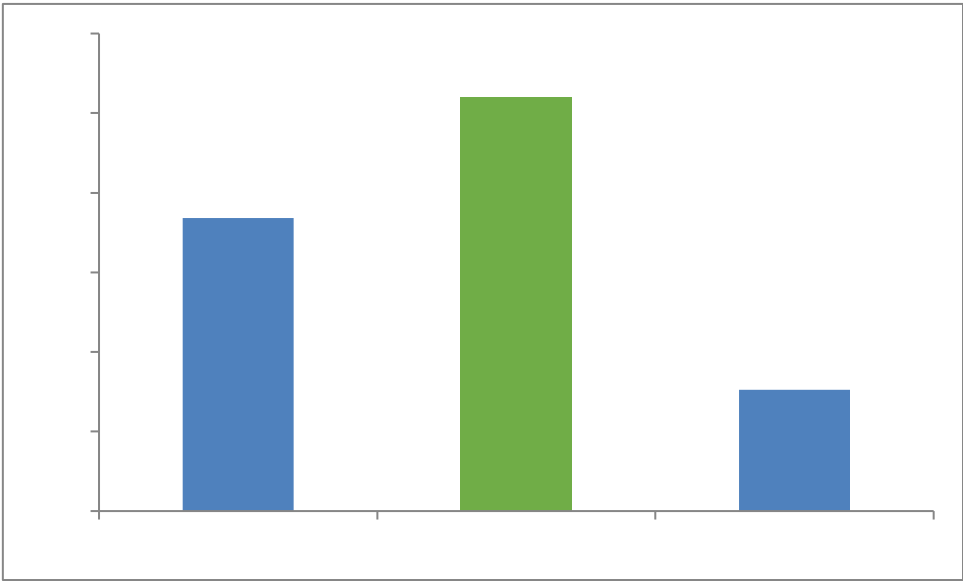
SICHUAN COLLEGE OF ARCHITECTURAL TECHNOLOGY

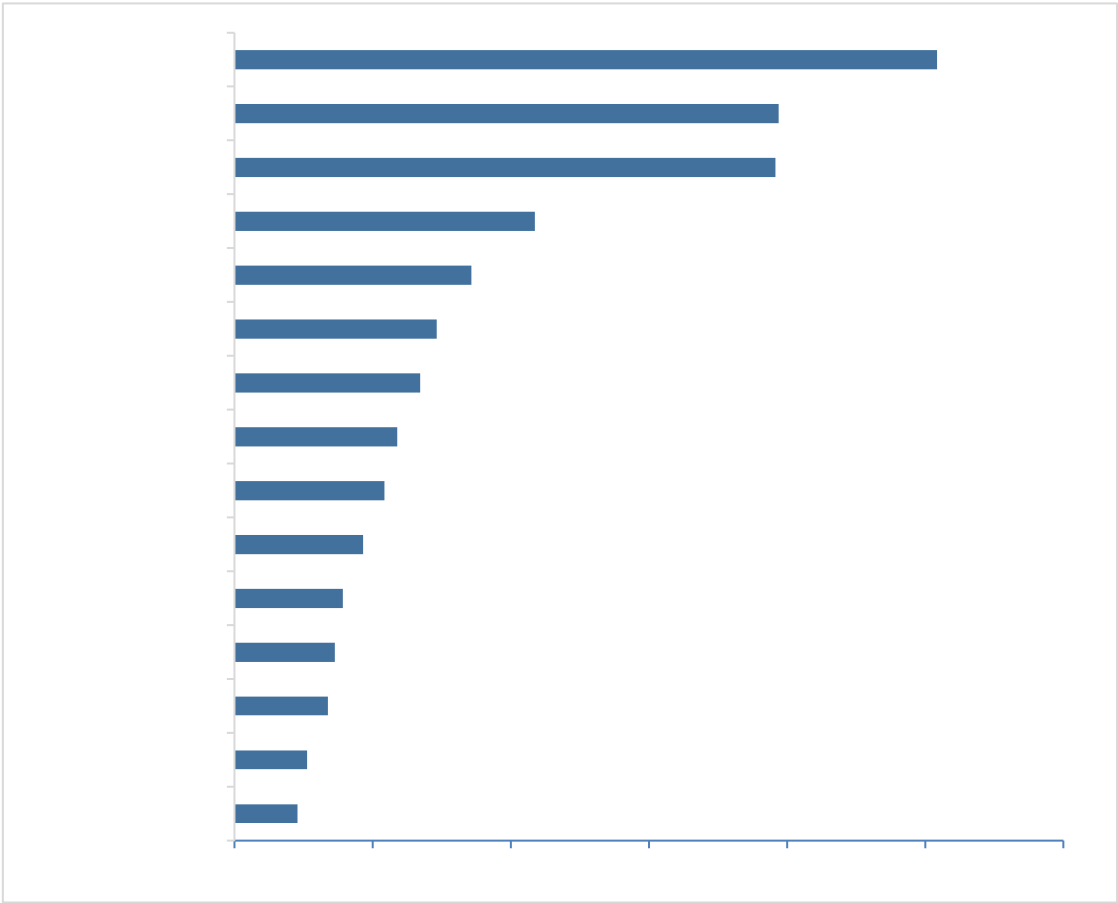




第一章 就业创业状况	1
.....	1
.....	5
.....	14
.....	14
第二章 就业质量	17
.....	17
.....	17
.....	20
.....	20
第三章 求职过程	21
.....	21
.....	21
第四章 就业创业工作评价	22
.....	22
.....	22

.....	23
.....	24
第五章 教育教学过程评估	25
.....	25
.....	25
.....	26
.....	27
.....	27
第六章 母校满意度和推荐度	28
.....	28
.....	30
第七章 用人单位评价	31

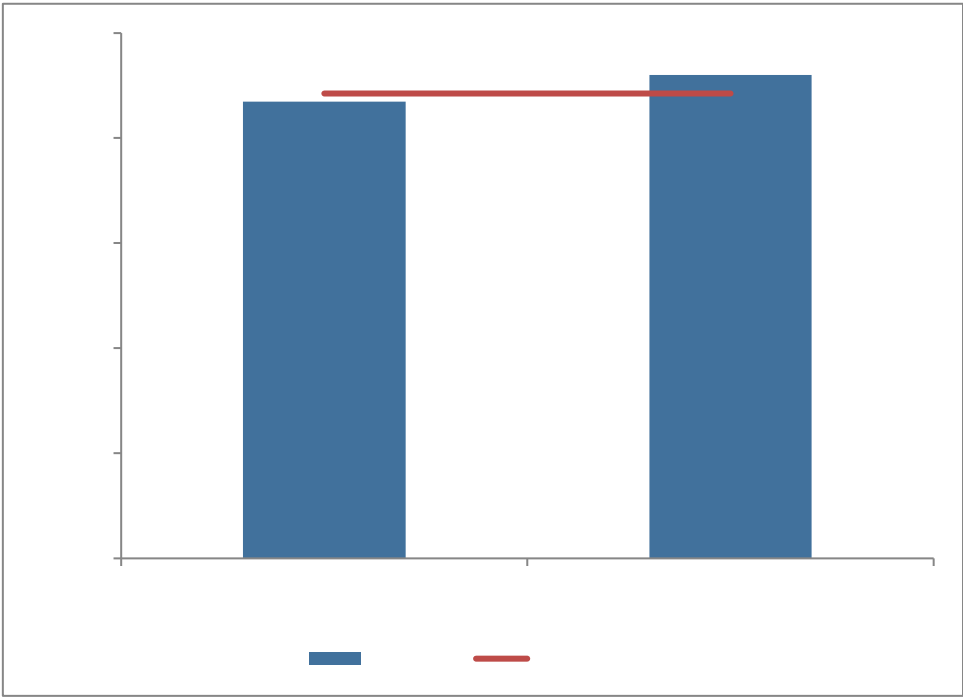


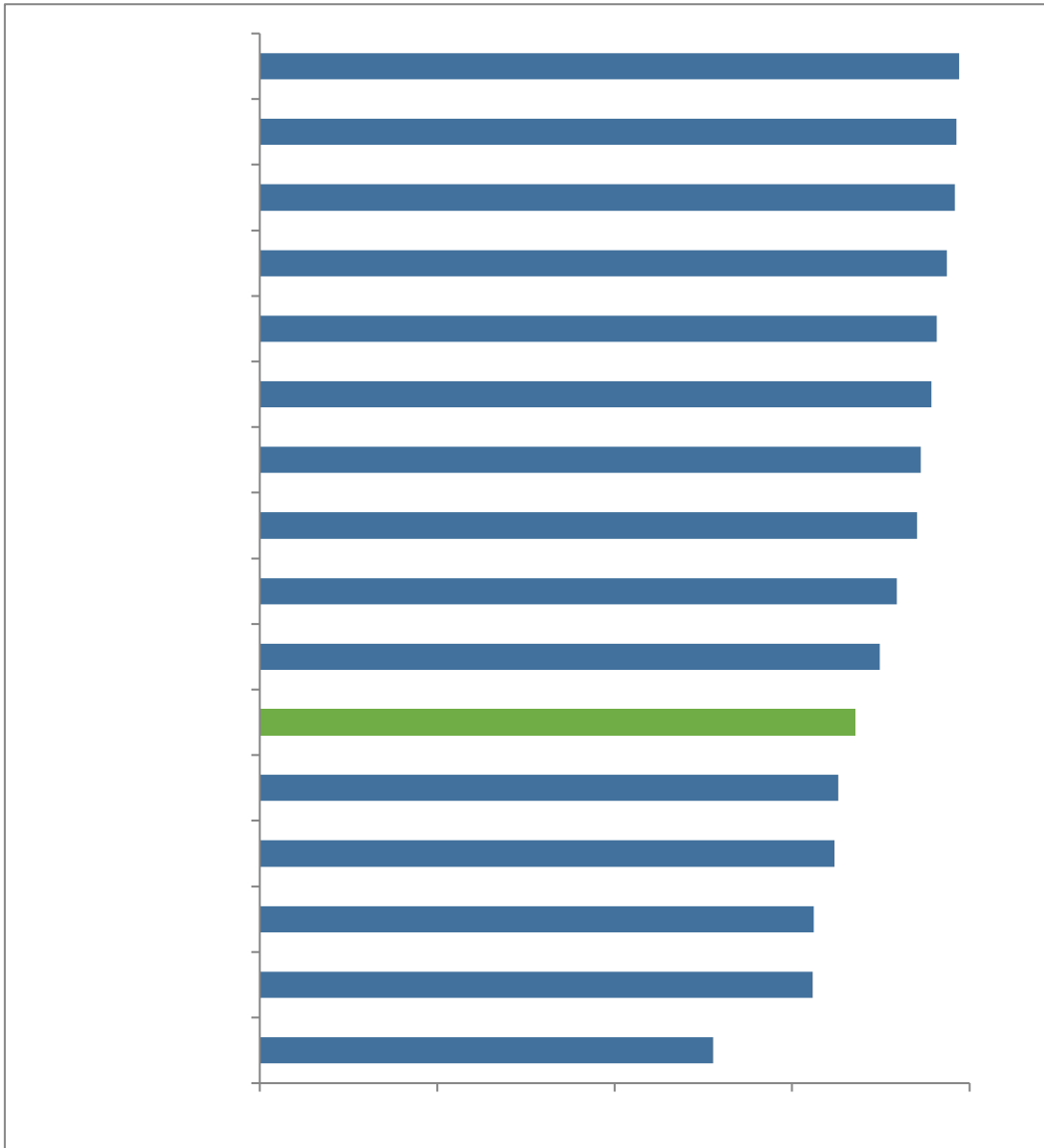


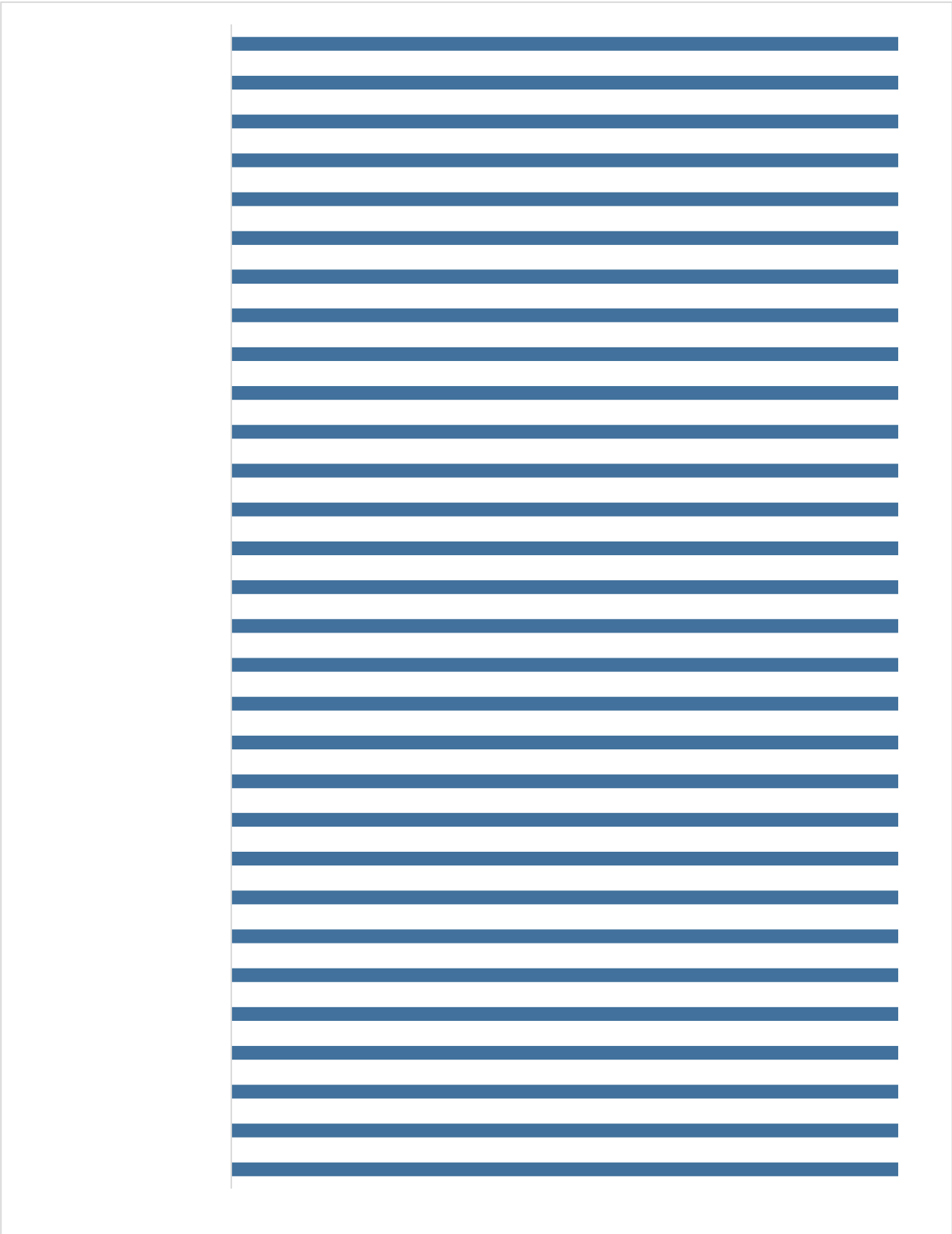
	1059		43
	983		42
	192		42
	177		41
	141		38
	118		38

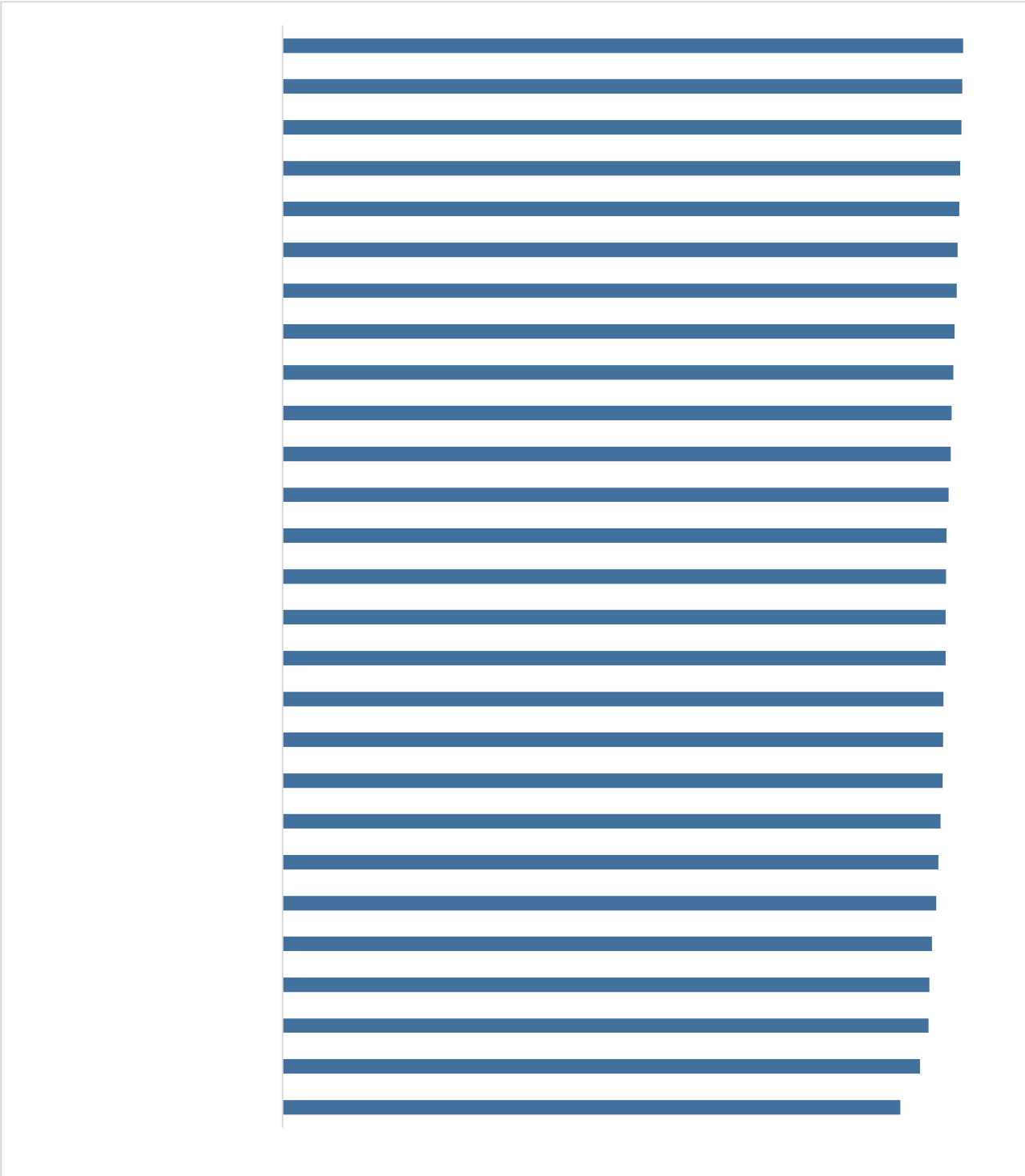
	113		38
	106		35
	100		35
	94		35
	91		35
	89		34
	87		34
	81		32
	79		31
	76		30
	68		30
	67		29
	66		27
	63		27
	61		26
	61		26
	60		24
	57		23
	55		21
	53		18
	49		17
	45		14
	44		

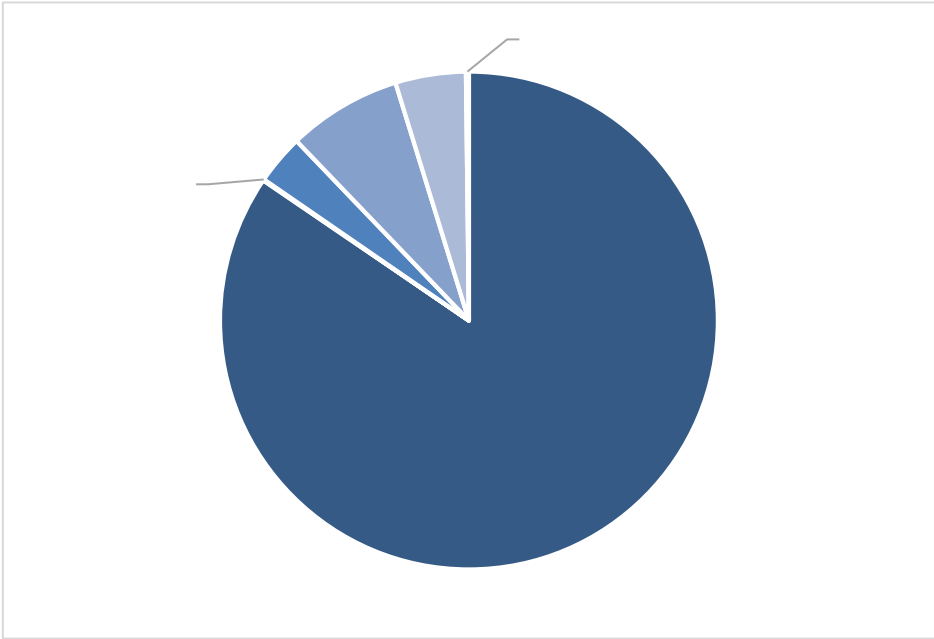


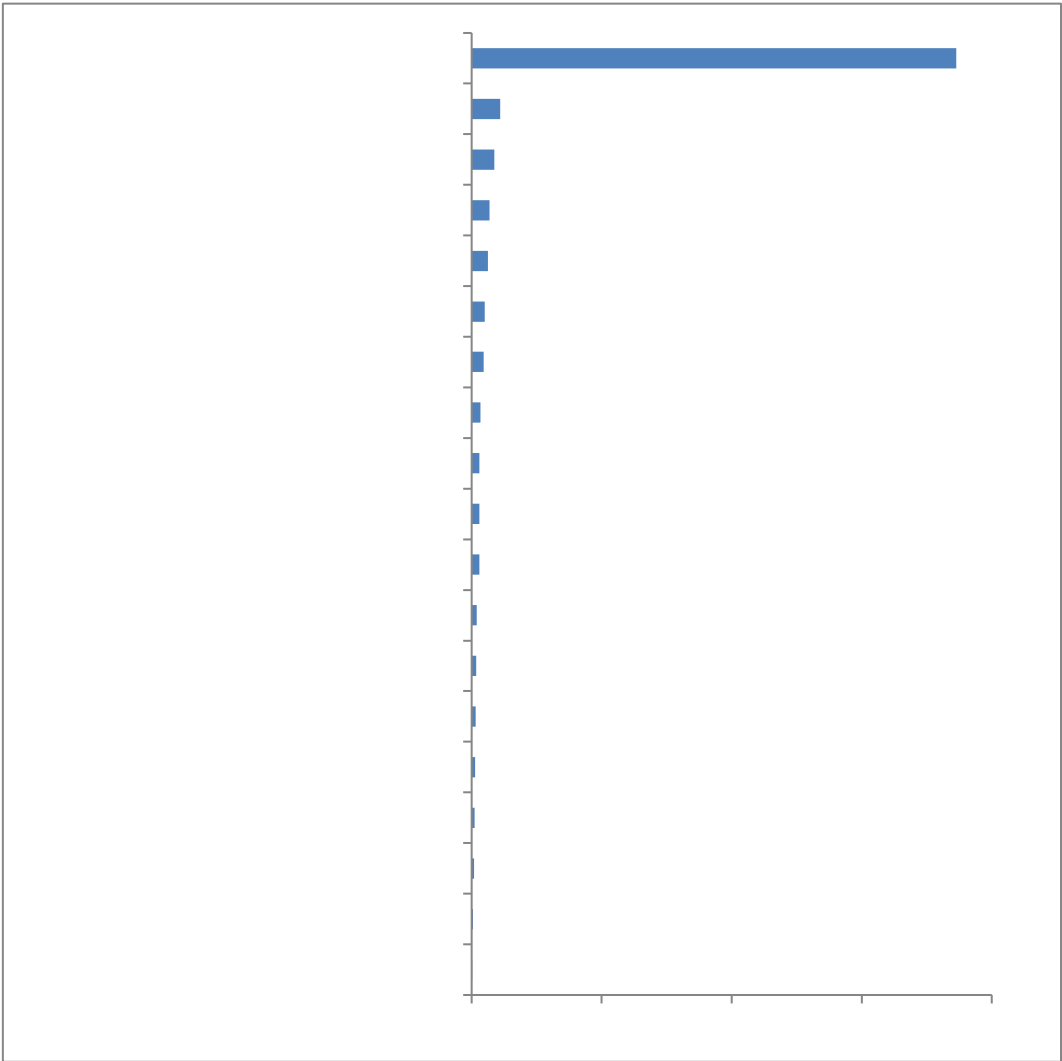


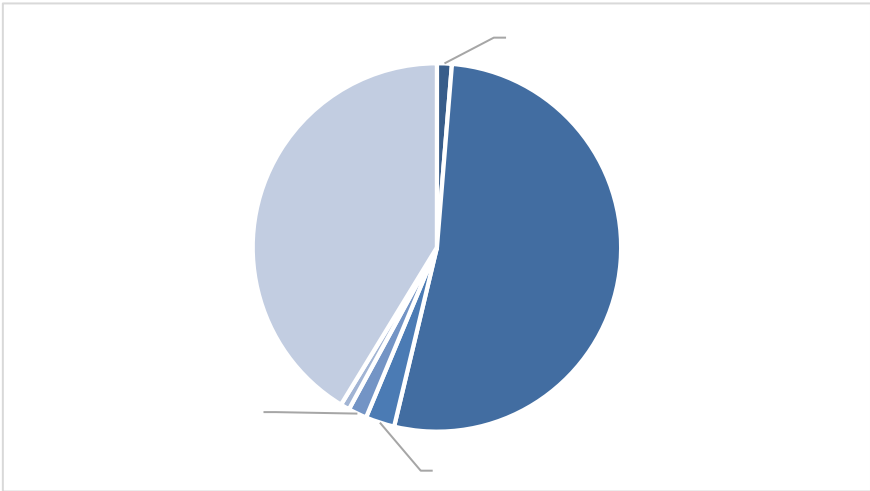




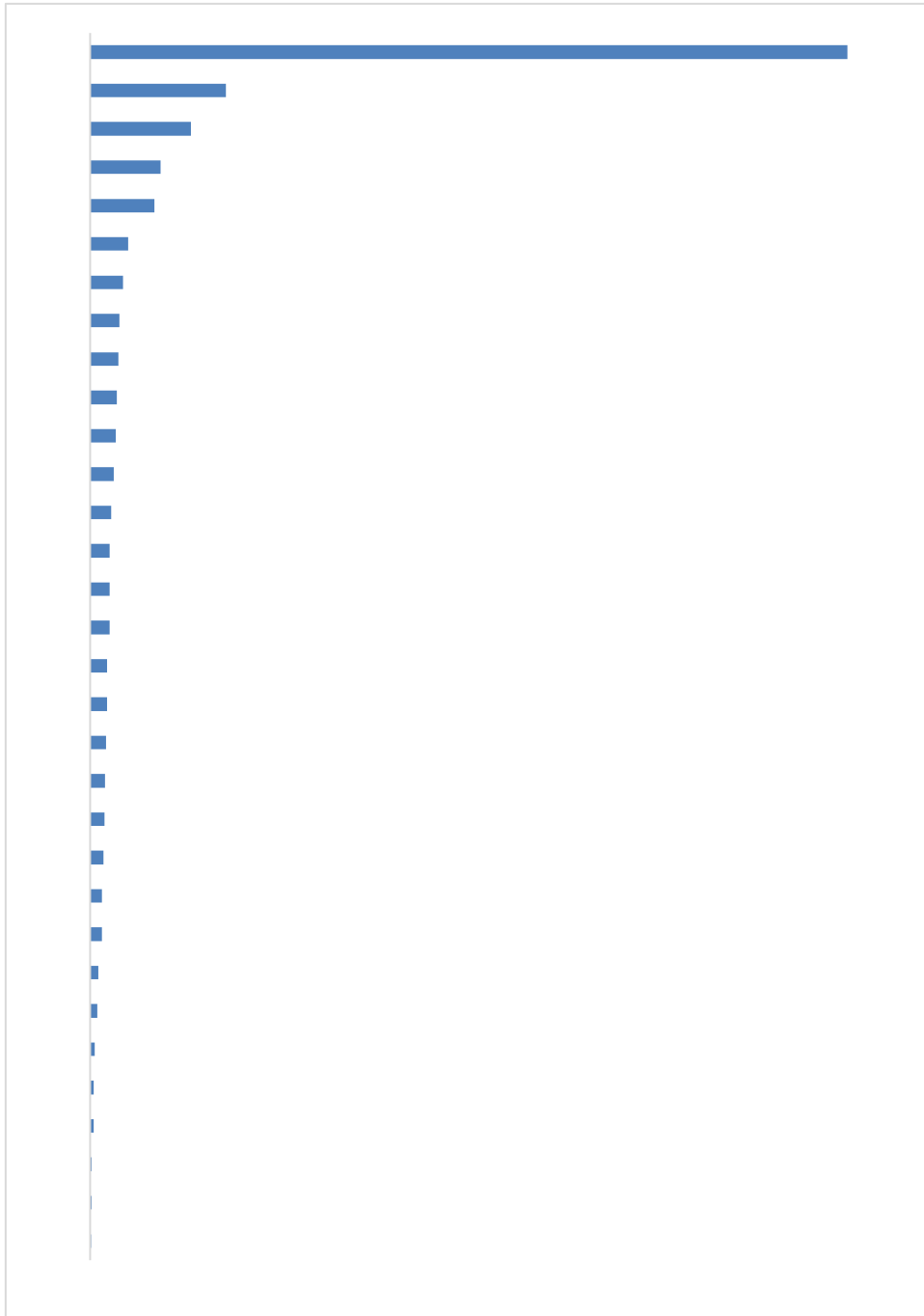




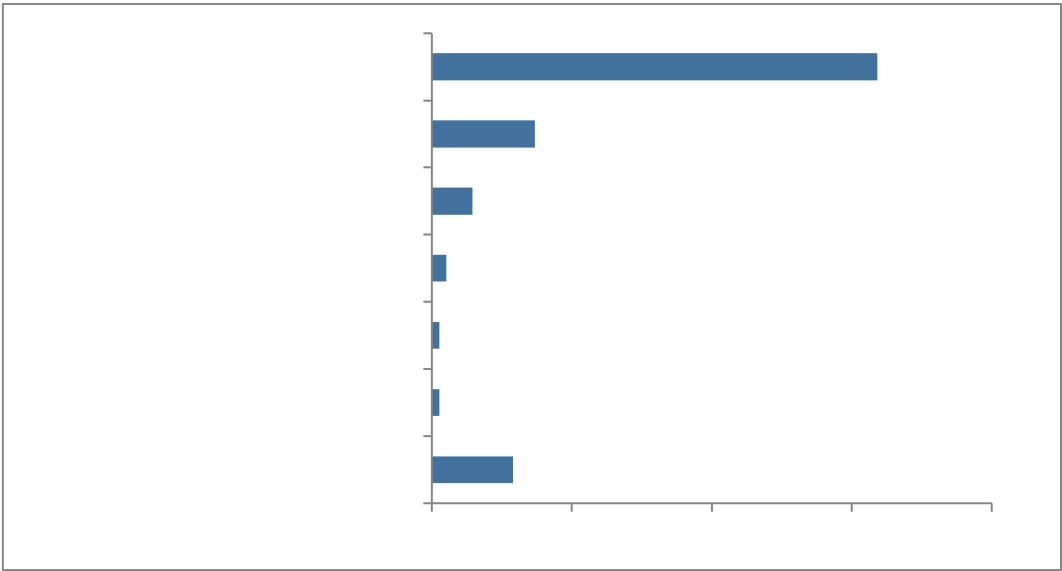


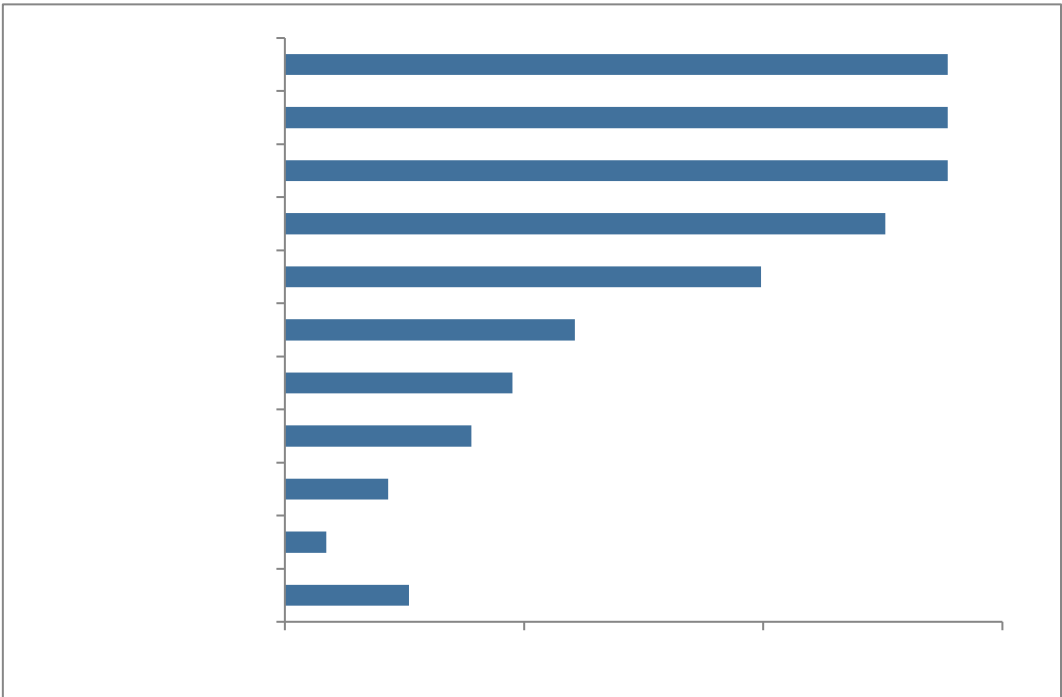
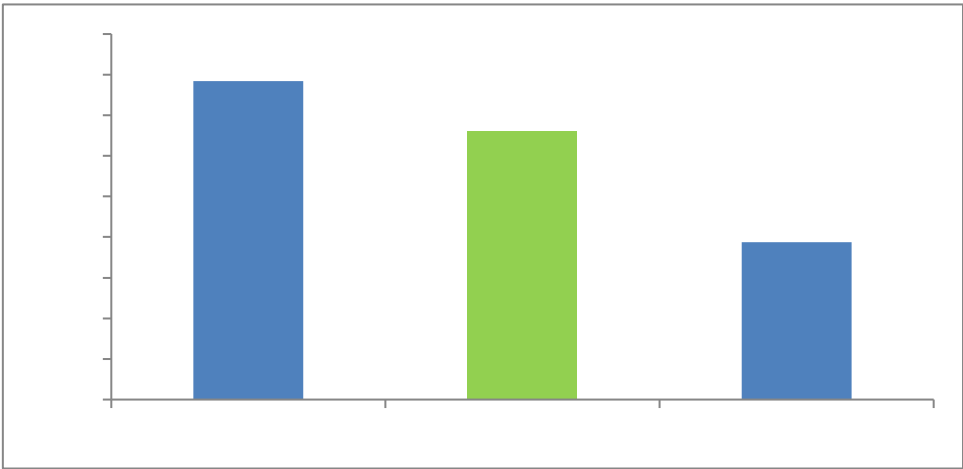


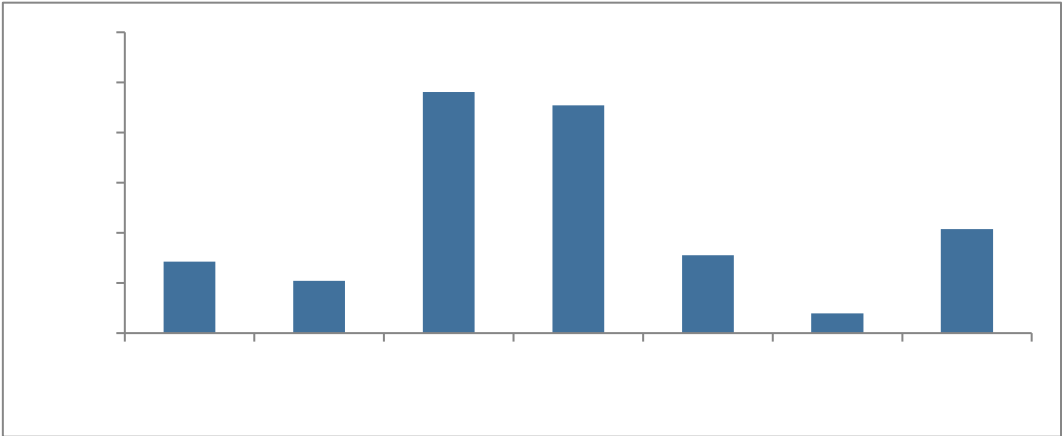
1.

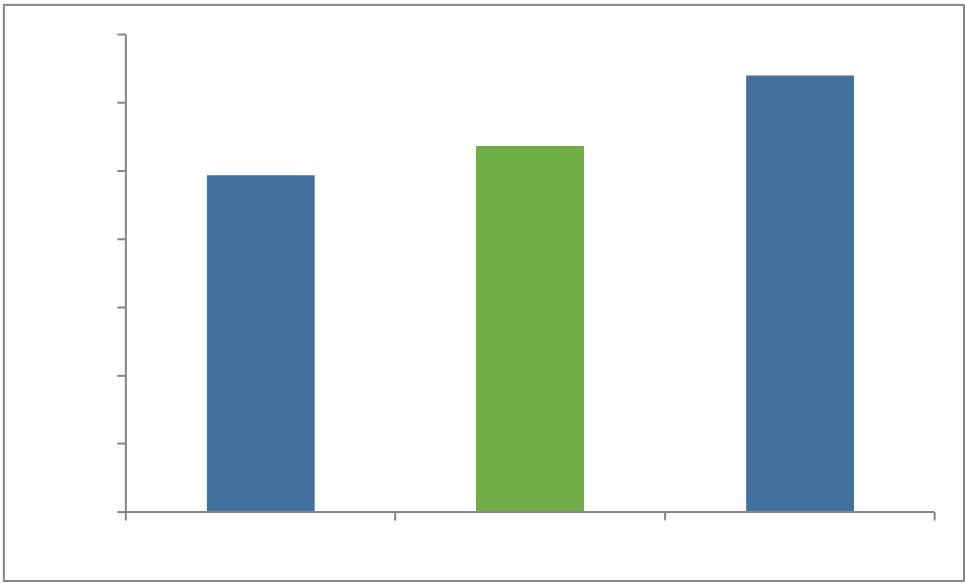


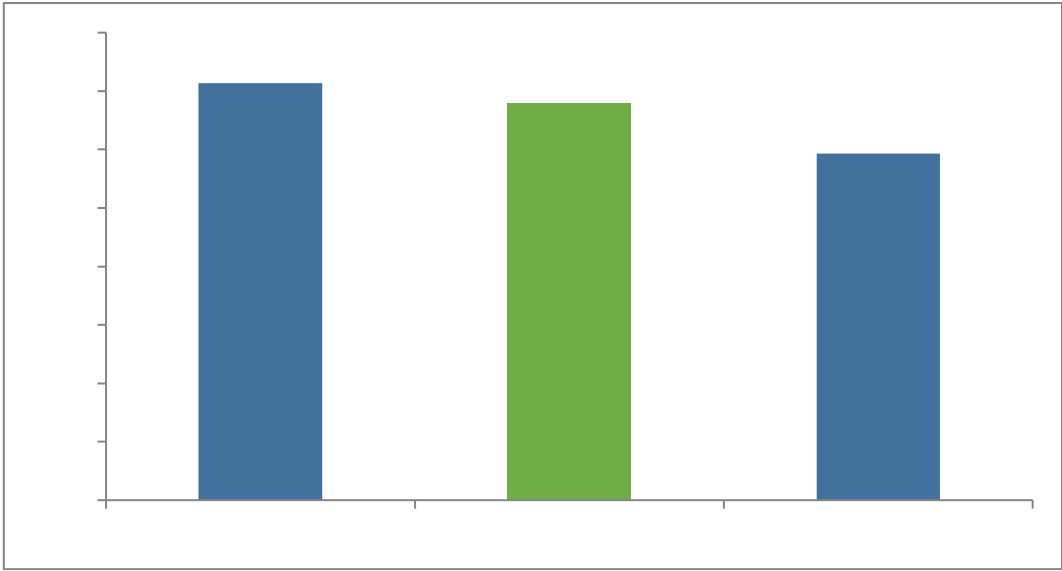
2.





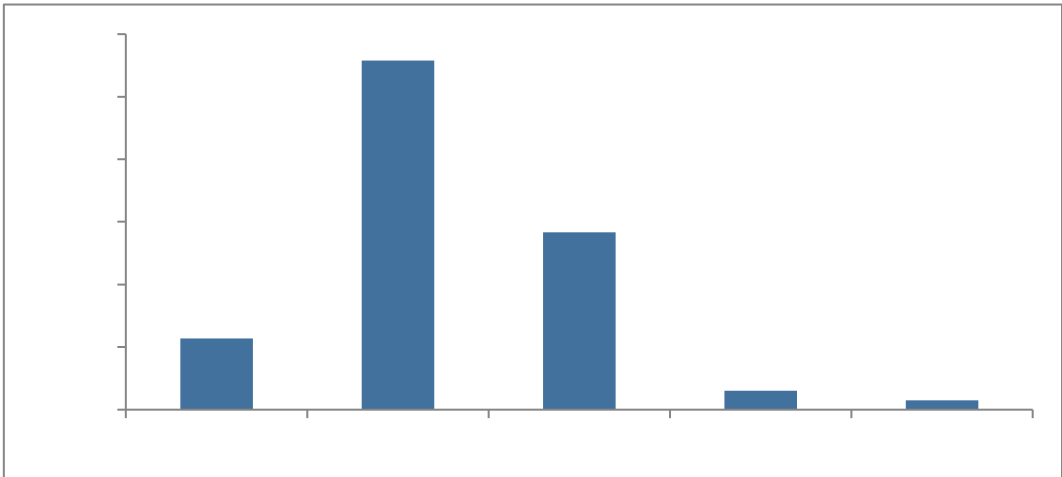
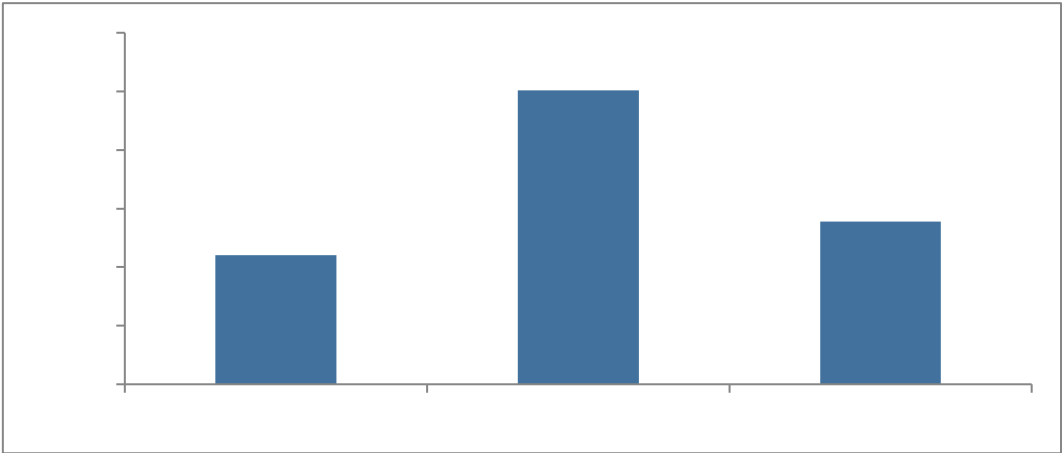


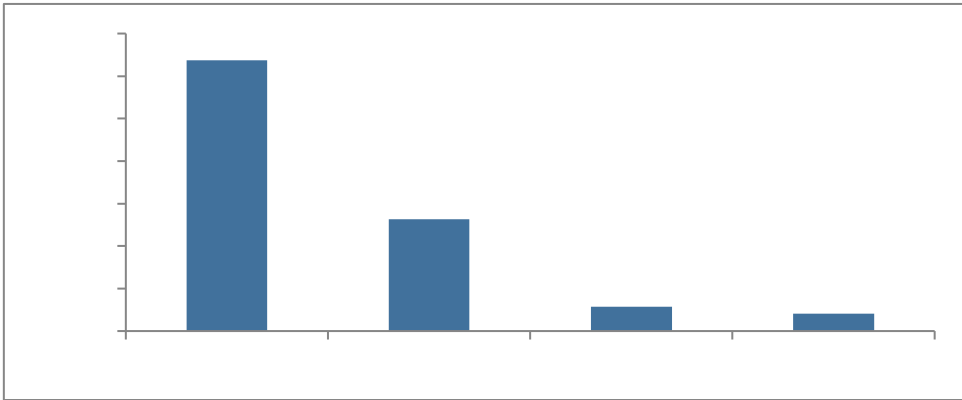
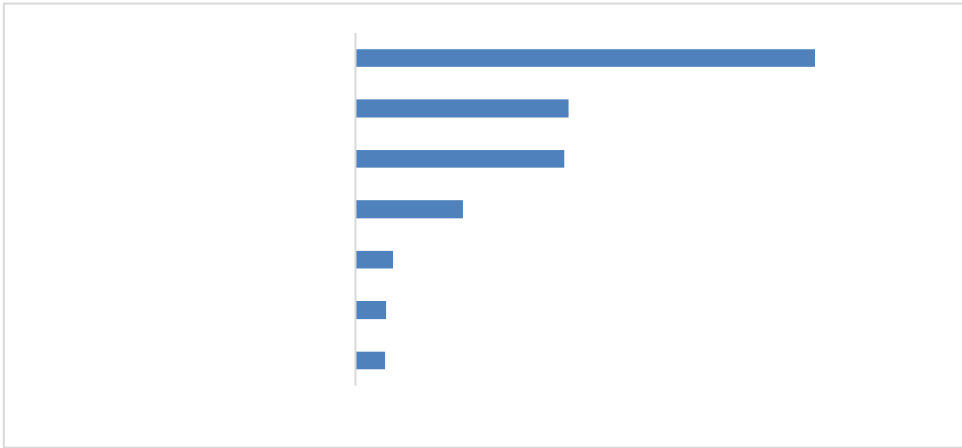


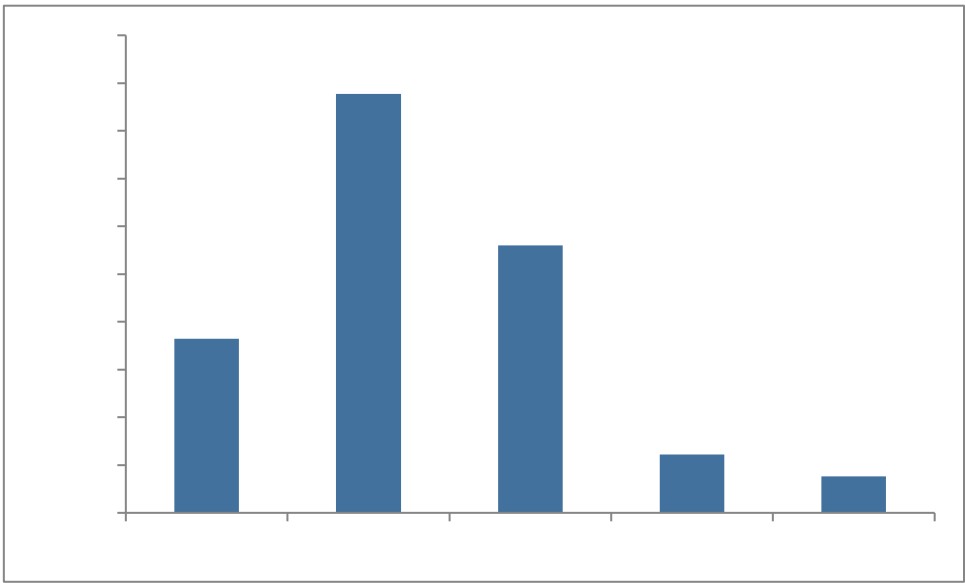


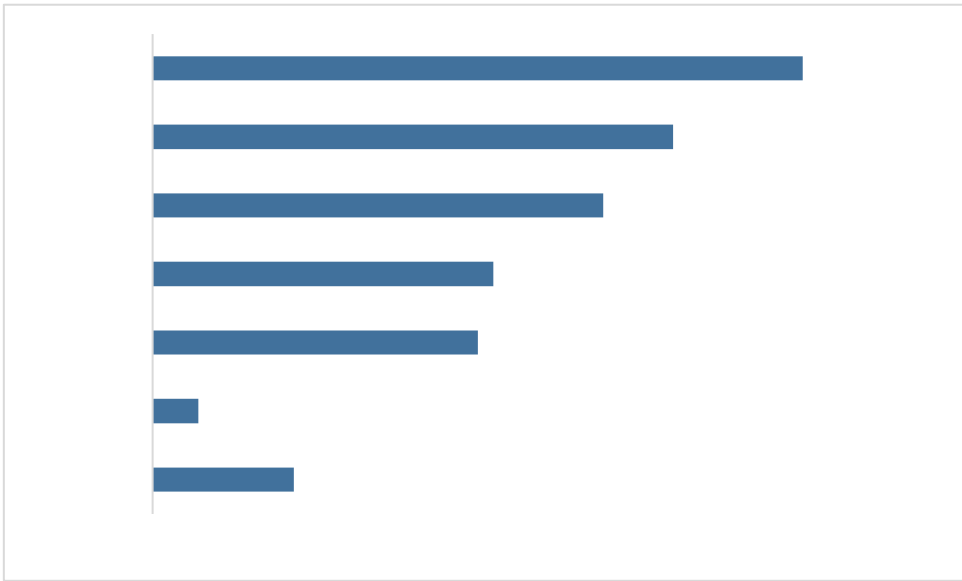
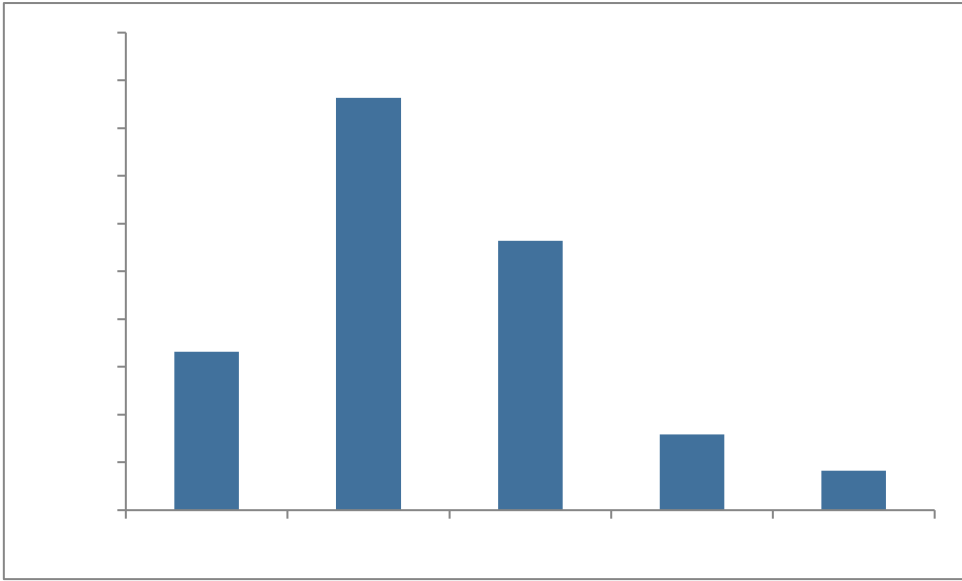
	4950		3744
	4789		3680
	4684		3636
	4400		3623
	4388		3616
	4036		3588
	3989		3525
	3956		3456
	3956		3425
	3929		3424
	3888		3417
	3868		3410
	3843		3406
	3760		3400
	3750		3359

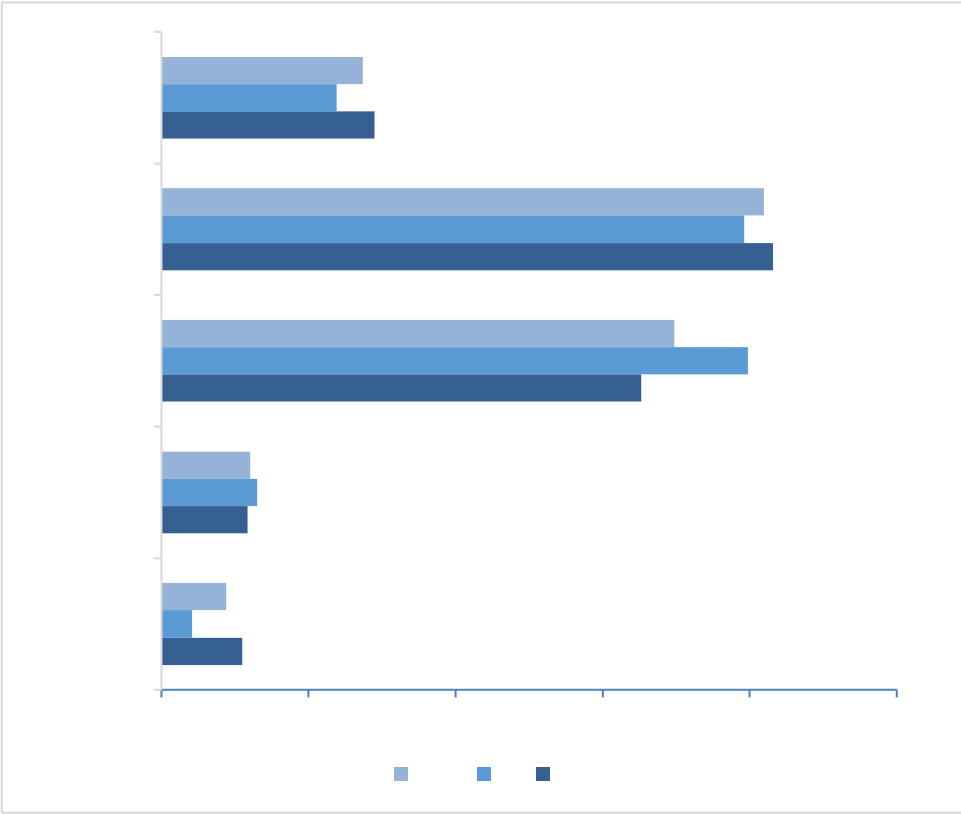
	3344		3124
	3314		3088
	3302		3064
	3291		3034

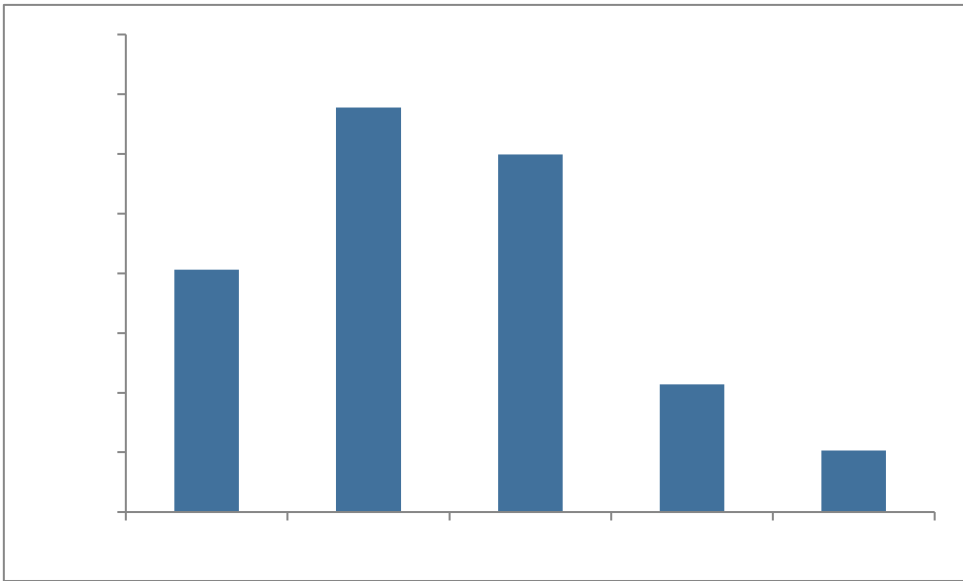


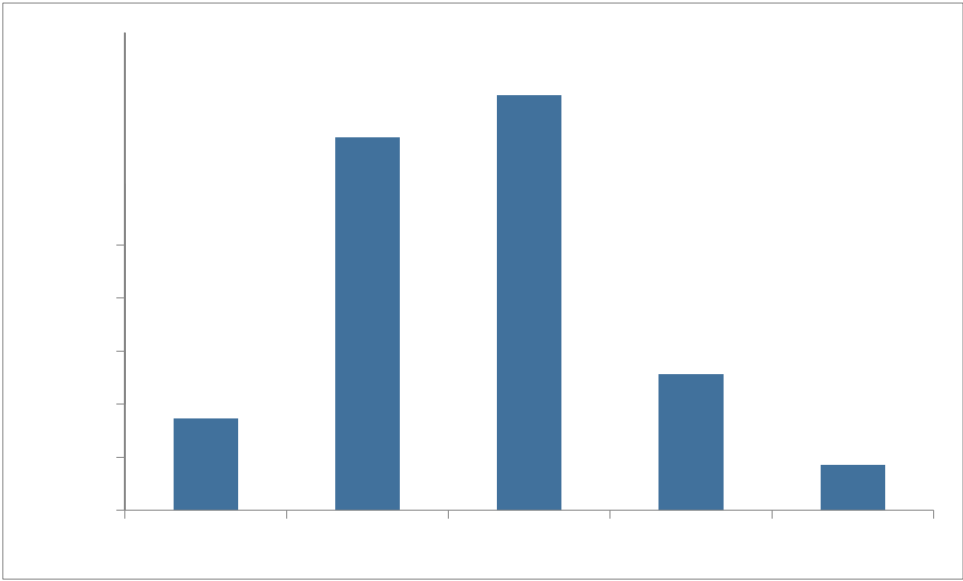








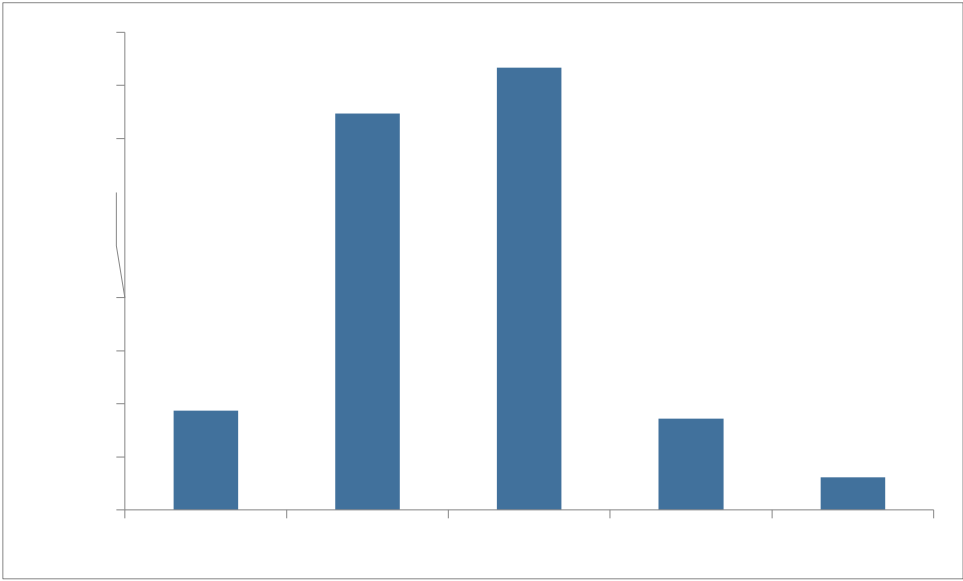




88.37% 2016

9.36%

37.36%



2016

97.51%

34.22%

47.32%

